

December 2018



## New posts on spatialeconomics.nl



[The influence of Airbnb on the housing market](#)



[Mozambique's energy future](#)



[Detecting and anticipating early signs of famines](#)

## News from the Department

### [Erik Verhoef, Jos van Ommeren and Jan Rouwendal in ESB Top 40](#)

In the ESB Top 40 Best Dutch economists, our department is well represented: Erik Verhoef occupies the 12<sup>th</sup>, Jos van Ommeren the 13<sup>th</sup>, and Jan Rouwendal the 36<sup>th</sup> place. Not only our department, but also VU in general is doing exceptionally well. Of all universities in the Netherlands, VU has the most economists (10) in the ESB Top 40 Best Dutch Economists, followed by Erasmus University Rotterdam (9), and Tilburg University (6). The Top 40 is published annually by Economisch Statistische Berichten (ESB). [More information.](#)

### [New research project: U-PASS](#)

The research project U-PASS (Urban Public Administration and Services innovation for Innovative Urban Mobility Management and Policy) brings together researchers from VU, Leeds University, Beijing Jiaotong University, Zhejiang University, and the Beijing Transport Research Institute. U-PASS, led by **Erik Verhoef**, addresses the world-wide shared desire and need for more efficient, reliable and environmentally sustainable urban transport, with a focus on policies and services such as tradable credits schemes, automated vehicles, electric driving, ride sharing, car sharing, and cycling. The project will last for four years and is funded by the NSFC JPI Urban Europe programme.

## New research project: SIMETRI

The research project SIMETRI (Sustainable Mobility and Equality in mega-ciTy Regions: patterns, mechanisms and governance) brings together researchers from UCL, Birkbeck University of London, King's College London, VU Spatial Economics, Shenzhen University, Shenzhen Institute of Research and Innovation, The University of Hong Kong and Sun Yat-sen University. SIMETRI will develop a world-class science platform relevant to political decision-makers responsible for housing, transport, employment and urban development in the world's biggest mega-city region, the Pearl River Delta Greater Bay Area. The platform integrates work on inequality indicators and predicting future land use and transport developed in western Europe in London and the Randstad with related work in Shenzhen and Guangzhou, producing a system that will use state-of-the-art simulation models, big data from routine transport, and new ways of using information technology for participatory governance. Within the project, **Eric Koomen** is responsible for developing the land use and transport modelling environment. SIMETRI is funded by the NSFC JPI Urban Europe programme.

## Vanguard Fellowship for Hans Koster and Ceren Ozgen

This autumn, Hans Koster and former colleague Ceren Ozgen were awarded the IAS (Institute of Advanced Studies) Vanguard Fellowship of the University of Birmingham for their research proposal on 'Skills Mismatch'. The Vanguard Fellowship Programme aims to attract outstanding early and mid-career researchers from global leading institutions, operating at the cutting edge of their disciplines, to work collaboratively with colleagues at the University of Birmingham. Research focuses on new and existing areas - topics that are timely, relevant, address national and international priorities, and cross disciplinary boundaries. >> [Read more](#).

## Climate policy publication

This year, the Royal Association of Economics (Koninklijke Vereniging voor de Staathuishoudkunde, KVS) devoted its annual '[Preadviezen](#)' to Climate Policy. The book presents accessible policy oriented contributions to the consequences of climate change and associated policy challenges in a national and international context. With this publication, the authors – among which **Henri de Groot, Marjan Hofkes, Steven Poelhekke, Cees Withagen, Gerard van der Meijden, Jeroen van den Bergh, Rick van der Ploeg**, and former colleague **Daan van Soest** – aim to contribute to effective climate policy making for current and future generations.



## New job ánd Maurice Strong Legacy Scholarship for Jamie Chen

Jamie Chen started to work as researcher at Sun Yat-sen University (Shuhai, China) in November, but she will continue her position as visiting researcher at our department. More good news about Jamie: she was awarded the Maurice Strong Legacy Scholarship. The scholarship amounts to 9000 euros, intended to mainly cover travel expenses and other research-related costs, allowing Jamie to work at the CNR-IRISS institute in Naples (Italy) on a research project entitled 'social media big data and knowledge transfer to the tourism economy'.

## Upcoming Events

### Eureka Seminars

(held on Thursdays from 12:15-13:15, location flexible)

**20 December**, room HG-01A32

Cees Withagen: 'The social cost of the Ramsey Rule'

Mathieu Steijn: 'Dynamic coagglomeration'

**17 January:**

Ifa Isfandiarni

**21 February:**

Peter Mulder: 'Does a growing population density impedes the renewable energy transition in developing countries? A spatial model and evidence for Indonesia'

Arjen Trinks: 'Climate policy uncertainty & risk management'

**21 March:**

Francis Ostermeijer

Titles and locations, if not given: TBA

More information: [G.C.vanderMeijden@vu.nl](mailto:G.C.vanderMeijden@vu.nl)

### Spatial Economics Seminar at the Tinbergen Institute

(Location: Tinbergen Institute Amsterdam, room 1.01)

**10 January**, 12:15-13:15 Tim Rogers (University of Bath, UK)

**24 January**, 13:15-14:15: Mathias Thoenig (University of Lausanne, Switzerland)

Titles: TBA

More information: [H.Koster@vu.nl](mailto:H.Koster@vu.nl) or [M.D.Konig@vu.nl](mailto:M.D.Konig@vu.nl)

## Staff

### Welcome...



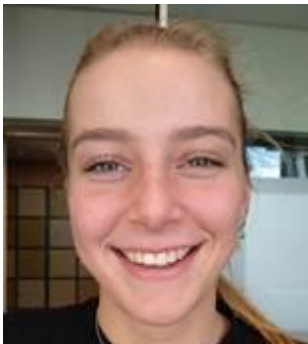
**Leon Bremer** is student assistant for the Master's program in Spatial, Transport and Environmental Economics, supervised by Jos van Ommeren. In addition, Leon is second-year MPhil student at the Tinbergen Institute. His research focuses on technological change and the environment.



**Eva Geerlings** is master student in geo-information at Utrecht University and joined EduGIS – a platform for geo-information technologies in education – as student assistant for one day a week. She is responsible for adding relevant data to the map-application and for performing promotional activities.



**Fenneke van der Poll**, a recent STREEM graduate, joined the department as research assistant under supervision of Peter Mulder. Her research covers two topics: how does the spatial distribution of energy affects economic growth? Secondly, she investigates Zipf's law.



In October **Elisa Binnerts** joined our department. Elisa assists Eric Pels with organizing the 23<sup>rd</sup> ATRS (Air Transport Research Society) World Conference, which will take place at VU Amsterdam from 2-5 July 2019.



**Apeksha Tare** joined our department as researcher under supervision of Jan Rouwendal. Her research relates to the evolution of commercial real estate prices in big cities and the impact of the Noord-Zuid Lijn on the retail character in Amsterdam. She recently obtained her Master's degree (cum laude) in Spatial Economics from the VU. She holds a Master's degree in Environmental Engineering from the University of Illinois at Urbana-Champaign.



**Qing Li** will join our department as visiting scholar for 12 months under supervision of Erik Verhoef. She received her doctor's degree in systems science from Beijing Jiaotong University (Beijing) and is now associate professor at Shandong University of Science and Technology, (Qingdao). Her research focuses on transportation big data and reliability.

## Goodbye...



**Steven Poelhekke** has moved to New Zealand to take up a position as Professor of Economics at the University of Auckland. Among his new duties is to teach master and PhD level development economics and a bachelor course in international finance, and direct the economics PhD program. He will also become director of New Zealand's APEC Study Centre, a government-funded research centre hosted by the University of Auckland and dedicated to the member economies of APEC (Asia-Pacific Economic Cooperation). He will stay affiliated to the Department of Spatial Economics at the VU.



Party crew member and researcher **Jesper de Groot** found a job at the Ministry of Social Affairs and Employment as data analyst per 12 November. Besides researcher with a focus on parking and chess player, he is also Formula 1 expert, witness his recent book, published by Epsilon. Jesper can be contacted on [jdgroot@minszw.nl](mailto:jdgroot@minszw.nl).

## In the media (*in Dutch*)

- ✓ 'Onzinnige getallen rond opwarming aarde' (Richard Tol in De Telegraaf, 3 December, 2018)
- ✓ Nederlandse economen pleiten voor CO2-taks, anders is het klimaatakkoord verloren (Jeroen van den Bergh, Steven Poelhekke, Rick van der Ploeg, Marjan Hofkes, Henri de Groot, Cees Withagen, 29 November, 2018)
- ✓ Over het project U-SMILE (Erik Verhoef, Verdus.nl, 26 November, 2018)
- ✓ Files en rekeningrijden (Erik Verhoef in Zondag met Lubach, 11 November 2018)
- ✓ 'Voer belasting op CO2 uitstoot geleidelijk in' (Steven Poelhekke in Financieel Dagblad, 15 November, 2018)
- ✓ Helpt meer asfalt deze keer wel? (Erik Verhoef in NRC, 13 November, 2018)
- ✓ Het aantal files zal alleen nóg meer groeien. Wat te doen? (Erik Verhoef on NOS Journaal, 30 October, 2018)
- ✓ Probeer het gedrag van automobilisten te veranderen om het fileprobleem op te lossen (Erik Verhoef on RTL Nieuws Half Acht, 30 October, 2018, item starting on 16:53)
- ✓ Recept tegen verkeersinfarct: aan het eind van de file gas erop (Erik Verhoef in Financieel Dagblad, 29 October, 2018)
- ✓ Vanuit Spangen: de effecten van het Vogelaarwijkenbeleid (interview with Hans Koster on Radio Een Vandaag, 17 September, 2018)

## Key publications (21 June-21 November, 2019)

### Journal articles

- Aengenheyster, M., Feng, Q. Y., Van Der Ploeg, F., & Dijkstra, H. A. (2018). The point of no return for climate action: Effects of climate uncertainty and risk tolerance. *Earth System Dynamics*, 9(3), 1085-1095. <https://doi.org/10.5194/esd-9-1085-2018>
- Bakens, J., Florax, R. J. G. M., & Mulder, P. (2018). Ethnic drift and white flight: A gravity model of neighborhood formation. *Journal of Regional Science*, 58(5), 921-948. <https://doi.org/10.1111/jors.12390>
- Bardaka, E., Delgado, M. S., & Florax, R. J. G. M. (2018). Causal identification of transit-induced gentrification and spatial spillover effects: The case of the Denver light rail. *Journal of Transport Geography*, 71, 15-31. <https://doi.org/10.1016/j.jtrangeo.2018.06.025>
- Fischer, C., Mao, B., & Shawhan, D. (2018). Trade between mass- and rate-based regulatory regimes: Bad for emissions? *Energy Economics*, 73, 326-336. <https://doi.org/10.1016/j.eneco.2018.04.031>
- Fu, X., van den Berg, V. A. C., & Verhoef, E. T. (2018). Private road supply in networks with heterogeneous users. *Transportation Research Part A: Policy and Practice*, 118(December), 430-443. <https://doi.org/10.1016/j.tra.2018.09.025>
- Gosens, T., & Rouwendal, J. (2018). Nature-based outdoor recreation trips: Duration, travel mode and location. *Transportation Research Part A: Policy and Practice*, 116, 513-530. <https://doi.org/10.1016/j.tra.2018.06.024>
- Jaakkola, N., & van der Ploeg, F. (2018). Non-cooperative and cooperative climate policies with anticipated breakthrough technology. *Journal of Environmental Economics and Management*. <https://doi.org/10.1016/j.jeem.2018.04.001>
- King, L. C., & Van Den Bergh, J. C. J. M. (2018). Implications of net energy-return-on-investment for a low-carbon energy transition. *Nature Energy*, 3(4), 334-340. <https://doi.org/10.1038/s41560-018-0116-1>
- Kleijn, M. de, Beijaard, F., Koomen, E., & van Lanen, R. (2018). Simulating past land use patterns: The impact of the Romans on the Lower-Rhine delta in the first century AD. *Journal of Archaeological Science: Reports*, 20, 244-256. <https://doi.org/10.1016/j.jasrep.2018.04.006>
- Koster, P., Verhoef, E., Shepherd, S., & Watling, D. (2018). Preference heterogeneity and congestion pricing: The two route case revisited. *Transportation Research Part B: Methodological*, 117(Part A), 137-157. <https://doi.org/10.1016/j.trb.2018.08.010>
- Kroes, E., Koster, P., & Peer, S. (2018). A practical method to estimate the benefits of improved road network reliability: an application to departing air passengers. *Transportation*, 45(5), 1433-1448. <https://doi.org/10.1007/s11116-017-9764-4>
- Kusse, B., van Manen, N., & Scholten, H. (2018). GeoS4S module incident and crisis management. *International Journal of Geoinformatics*, 14(3), 57-60.
- Manen, N. van, N., Hettinga, S., & Scholten, H. J. (2018). GeoS4S module geodesign. *International Journal of Geoinformatics*, 14(3), 19-21.
- Meijden, G. van der, Ryszka, K., & Withagen, C. (2018). Double limit pricing. *Journal of Environmental Economics and Management*, 89, 153-167. <https://doi.org/10.1016/j.jeem.2018.03.010>
- Peer, S., Börjesson, M., & Börjesson, M. (2018). Temporal framing of stated preference experiments: does it affect valuations? *Transportation Research Part A: Policy and Practice*, 117, 319-333. <https://doi.org/10.1016/j.tra.2018.08.027>
- Ploeg, F. van der (2018). Breakthrough renewables and the green paradox. *FinanzArchiv*, 74(1), 52-70. <https://doi.org/10.1628/001522118X15101422148687>
- Ploeg, F. van der, & de Zeeuw, A. (2018). Climate Tipping and Economic Growth: Precautionary Capital and the Price of Carbon. *Journal of the European Economic Association*, 16(5), 1577-1617. <https://doi.org/10.1093/jeea/jvx036>
- Ploeg, F. van der, & de Zeeuw, A. (2018). Pricing Carbon and Adjusting Capital to Fend Off Climate Catastrophes. *Environmental and Resource Economics*, 2018, 1-22. <https://doi.org/10.1007/s10640-018-0231-2>
- Ruiter, S., & Bernasco, W. (2018). Is travel actually risky? A study of situational causes of victimization. *Crime Science*, 7, 1-12. [10]. <https://doi.org/10.1186/s40163-018-0084-6>
- Safarzyńska, K., & van den Bergh, J. C. J. M. (2018). A higher rebound effect under bounded rationality: Interactions between car mobility and electricity generation. *Energy Economics*, 74, 179-196. <https://doi.org/10.1016/j.eneco.2018.06.006>



- Song, G., Liu, L., Bernasco, W., Zhou, S., Xiao, L., & Long, D. (2018). Theft from the person in urban China: assessing the diurnal effects of opportunity and social ecology. *Habitat International*, 78(August), 13-20. <https://doi.org/10.1016/j.habitatint.2018.04.010>
- Tikoudis, I., Verhoef, E. T., & van Ommeren, J. N. (2018). Second-best urban tolls in a monocentric city with housing market regulations. *Transportation Research Part B: Methodological*, 117(Part A), 342-359. <https://doi.org/10.1016/j.trb.2018.08.014>
- Tol, R. S. J. (2018). Gender at energy economics. *Energy Economics*, 72, 558-559. <https://doi.org/10.1016/j.eneco.2018.04.029>
- Tol, R. S. J. (2018). Policy Brief - Leaving an emissions trading scheme: Implications for the United Kingdom and the European Union. *Review of Environmental Economics and Policy*, 12(1), 183-189. <https://doi.org/10.1093/reep/rex025>
- Tol, R. S. J. (2018). The economic impacts of climate change. *Review of Environmental Economics and Policy*, 12(1), 4-25. <https://doi.org/10.1093/reep/rex027>

### Working papers

- Ansink, E., & Weikard, H. P. (2018). *Common pool resources: Is there support for conservationists?* (TI Discussion Paper Series; No. 18-083/VIII). Amsterdam: Tinbergen Institute <http://www.tinbergen.nl/discussionpaper/?paper=2949>
- Konig, M. D., Zimmermann, C., Liu, X. (Author), & Hsieh, C-S. (2018). Superstar Economists: Coauthorship networks and research output. CESifo Working Paper Series 7309. CESifo Group Munich. <https://portal.cepr.org/discussion-paper-submission/2243>
- Konig, M. D., Hsieh, C-S., & Liu, X. (2018). Network Formation with Local Complements and Global Substitutes: The Case of R&D Networks. CEPR Discussion Paper Series DP13161. Centre for Economics Policy Research. [http://www.cepr.org/active/publications/discussion\\_papers/dp.php?dpno=13161](http://www.cepr.org/active/publications/discussion_papers/dp.php?dpno=13161)
- Lankhuizen, M. B. M., Thissen, M., Los, B., van Oort, F., & Diodato, D. (2018). *EUREGIO: The construction of a global IO DATABASE with regional detail for Europe for 2000-2010*. Tinbergen Institute Discussion Paper 084/VI <http://papers.tinbergen.nl/18084.pdf>
- Pelzl, P., & Poelhekke, S. (2018). *Good mine, bad mine: Natural resource heterogeneity and Dutch disease in Indonesia*. (Tinbergen Institute Discussion Paper; No. TI 2018 - 073/VIII). <http://papers.tinbergen.nl/18073.pdf>

[Show me all publications >>>](#)